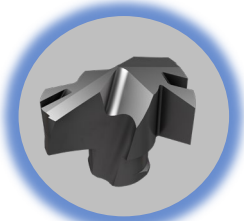


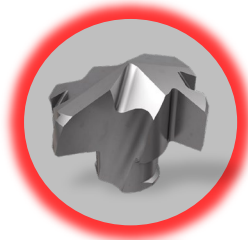
# LOGIQUICK DRILLING



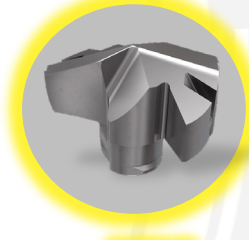
- ✓ Hohe Wiederholgenauigkeit
- ✓ Ideal für Mehrspindler und andere Drehautomaten
- ✓ Kein einmessen notwendig



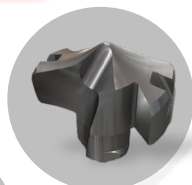
ICP



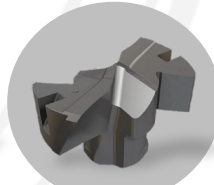
ICK



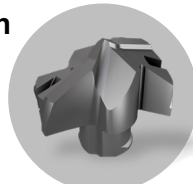
ICM



HCP-IQ



FCP



QCP-2M

- ✓ Profitieren Sie von einer großen Auswahl an Bohrkopfgeometrien



Member IMC Group

QCP-2M

Produkt-Videos & Übersicht



# PICCO SUMOCHAM



SUMOCHAM Drill with Internal Coolant Channels Features a PICCO Connection



Dia. Range: 4mm-10mm  
Exchangeable Drilling Head Range in Increments of 0.1mm

**YOU** Drilling Intelligently?

Small Holders with Internal Coolant Channels. Suitable for Small and Swiss Type Machines.



LOGIQUICK  
MACHINING INTELLIGENTLY

## Kundennutzen:

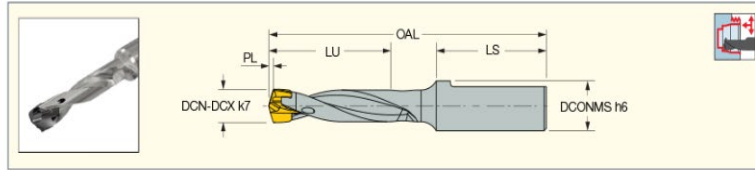
- Kürzere Rüstzeiten
- Einfache Handhabung (*Werkzeugwechsel innerhalb der Maschine*)
- Hohe Vorschübe
- Prozesssichere Zerspanung


**PICCO SUMO CHAM**




## PICCO SUMO CHAM

**DCN-PICCO**  
Drill Body with Exchangeable  
Heads, Internal Coolant Holes  
and a Picco Connection,  
Drilling Depth 3xD



| Designation                            | DCN <sup>(2)</sup> | DCX <sup>(3)</sup> | DCONMS | LU    | PL    | LS   | OAL   | SSC <sup>(4)</sup> | MIID <sup>(5)</sup> |  |
|--|--------------------|--------------------|--------|-------|-------|------|-------|--------------------|---------------------|---|
| DCN 040-012-06-3D-PICCO <sup>(1)</sup> | 4.00               | 4.40               | 6.00   | 12.62 | 0.620 | 14.9 | 37.60 | 4.0                | ICP 040             |   |
| DCN 045-014-06-3D-PICCO <sup>(1)</sup> | 4.50               | 4.90               | 6.00   | 14.66 | 0.660 | 14.9 | 39.55 | 4.5                | ICP 045             |   |
| DCN 050-015-06-3D-PICCO <sup>(1)</sup> | 5.00               | 5.40               | 6.00   | 15.73 | 0.730 | 14.9 | 41.20 | 5.0                | ICP 050             |   |
| DCN 055-017-06-3D-PICCO <sup>(1)</sup> | 5.50               | 5.90               | 6.00   | 17.81 | 0.810 | 14.9 | 42.85 | 5.5                | ICP 055             |   |
| DCN 060-018-06-3D-PICCO                | 6.00               | 6.40               | 6.00   | 18.96 | 0.960 | 14.9 | 44.50 | 6.0                | ICP 060             | K DCN 6-9.99-Y  |
| DCN 065-020-06-3D-PICCO                | 6.50               | 6.90               | 6.00   | 21.18 | 1.180 | 17.1 | 46.30 | 6.5                | ICP 065             | K DCN 6-9.99-Y  |
| DCN 070-021-08-3D-PICCO                | 7.00               | 7.40               | 8.00   | 22.01 | 1.010 | 20.0 | 55.80 | 7.0                | ICP 070             | K DCN 6-9.99  |
| DCN 075-023-08-3D-PICCO                | 7.50               | 7.90               | 8.00   | 24.10 | 1.100 | 20.0 | 57.10 | 7.0                | ICP 075             | K DCN 6-9.99  |
| DCN 080-024-08-3D-PICCO                | 8.00               | 8.40               | 8.00   | 25.20 | 1.200 | 20.0 | 59.40 | 8.0                | ICP 080             | K DCN 6-9.99  |
| DCN 085-026-08-3D-PICCO                | 8.50               | 8.90               | 8.00   | 26.35 | 1.350 | 20.0 | 60.90 | 8.0                | ICP 085             | K DCN 6-9.99  |
| DCN 090-027-08-3D-PICCO                | 9.00               | 9.40               | 8.00   | 28.35 | 1.350 | 20.0 | 63.30 | 9.0                | ICP 090             | K DCN 6-9.99  |
| DCN 095-029-08-3D-PICCO                | 9.50               | 9.90               | 8.00   | 30.44 | 1.440 | 20.0 | 64.30 | 9.0                | ICP 095             | K DCN 6-9.99  |
| DCN 100-030-08-3D-PICCO                | 10.00              | 10.90              | 8.00   | 31.50 | 1.500 | 20.0 | 66.20 | 10.0               | ICP 100             | K DCN 10-13.99  |

## Spare Parts

| Designation          |  |
|----------------------|---|
| DCN 060-012-MMT06-2D | K DCN 6-9.99-Y  |
| DCN 065-013-MMT06-2D | K DCN 6-9.99-Y  |
| DCN 070-014-MMT06-2D | K DCN 6-9.99  |
| DCN 075-015-MMT06-2D | K DCN 6-9.99  |
| DCN 080-016-MMT06-2D | K DCN 6-9.99  |
| DCN 085-017-MMT06-2D | K DCN 6-9.99  |
| DCN 090-018-MMT08-2D | K DCN 6-9.99  |
| DCN 095-019-MMT08-2D | K DCN 6-9.99  |
| DCN 100-020-MMT08-2D | K DCN 10-13.99  |